

OPERATION, MAINTENANCE AND TECHNICAL MANUAL

SURFACE AERATOR

JM SERIES
2 to 5 hp units

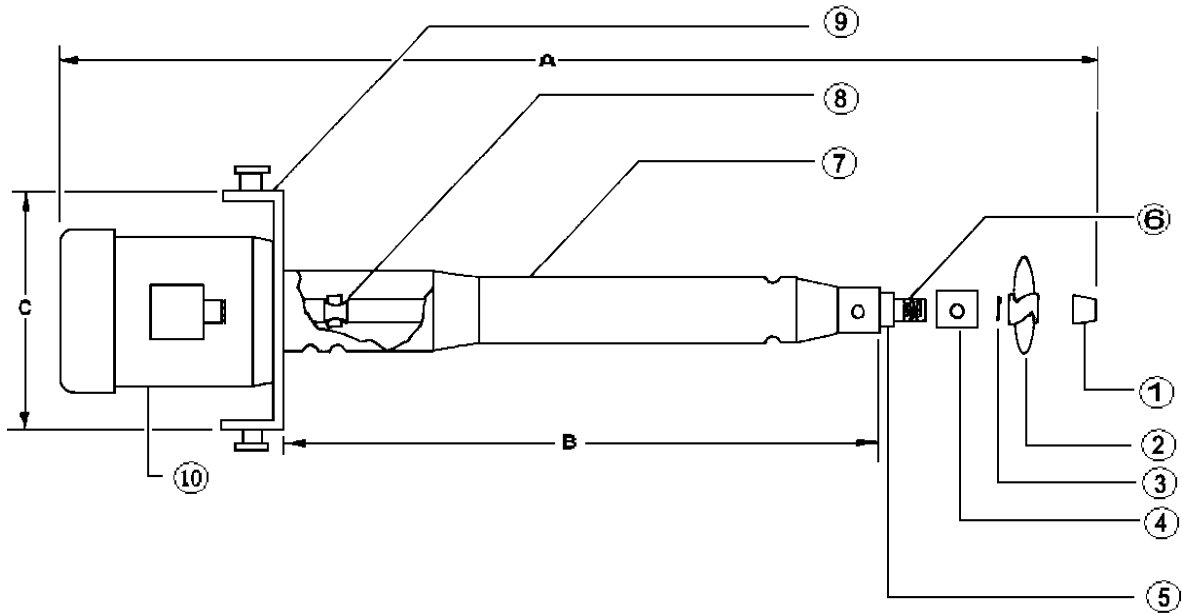


CONTENTS

1. PARTS NAME	P. 3
2. CAUTION TO SAFETY and MAINTENANCE	P. 4,5
3. INSTALLATION	P. 6,7



1. PARTS NAME



Parts & Materials

NUMBER	1	2	3	4	5	6
NAME & MATERIALS	Diffuser & Stainless Steel 316 or 304	Propeller & Stainless Steel 316	Washer & Nylon	Bearing & Fluorel	Sleeve & Ceramic	Rotating Hollow Shaft & Stainless Steel 316 or 304
NUMBER	7	8	9	10		
NAME & MATERIALS	Unit Housing & Stainless Steel 316 or 304	U-Joint & Forged Carbon Steel	Mounting Flange & Stainless Steel 316 or 304	C-Face Motor With Special Design		



2. CAUTION TO SAFETY

1. Wiring and control system shall be done only by qualified personnel.
2. Check the power cable and other devices connection points to make sure the Screws and Bolts are tightened. Loose parts will cause the motor and machine break down.
3. The Screw of terminal box of motor must be wrapped by insulation tape to prevent electric shocks and fire accident.
4. Each aerator must equip with overload and earth leakage circuit protection.
5. Check the operation of the aerator every day and remove any solids, rope , plastic bag and other solid materials surrounding aerator impeller.
6. When you have finish the assembly of the equipment the aerator may be transferred to the water. Keep the unit horizontal as it is lowered into the water, otherwise it may capsize and submerge the motor.
7. The aerator must be operated at least once a week for a period of at least 10~20 mins. The aerator must be in the the water when turned on otherwise the unit will operate at too high a speed and will cause damage to the the equipment after a few minutes.
8. If the aeratoir is not to be used for a long time, remove from the water to a dry location. Clean the ceramic sleeve and yoke, and add the some oil or grease.



3. INSTALLATION

STEP 1.

Open up the packing carton box. For convenience, you may dismantle the hood now instead of waiting until STEP 5.

STEP 2.

Put the aerator trunnions on float saddle. Lift the one of the aerator trunnion a little bit and insert this trunnion into the angle adjust bracket's hole. Bolt angle adjust brackets on the float saddle with 3/8" * 3/4" bolts (parts: a) and washer. (see fig.1)

STEP 3.

Use one hand to hold the aerator at the desired angle. Once the aerator is at the desired angle. Screw four 3/8" * 3/4" bolts (parts: b) on two each side angle adjust brackets and set the trunnions tightly.

Remark: reference for angle adjustment (Refer to Fig. 2)

Water Depth	Angle Adjusted To:
< 1.3 Meter	Upper limit
1.3 to 1.8 Meter	Middle
> 1.8 Meter	Lower limit

STEP 4.

Loosen screw of the terminal box and remove cover. Connect power cables to motor following connection diagram and fasten the terminal box cover again.

STEP 5.

Bolts 3/8" * 3/4" bolts through out the trunnions tapped hole and put hood back and tighten it with nuts



STEP 6.

Screw the eyebolt completely into the rear of the float and tighten the lock nut to hold the eyebolt in a level position.

In most soft bottom pond, we recommend user to use three anchoring stakes (please refer to fig.3) to fix the aerator operation position.

The aerator is now ready to be put into service.



2~5 HP

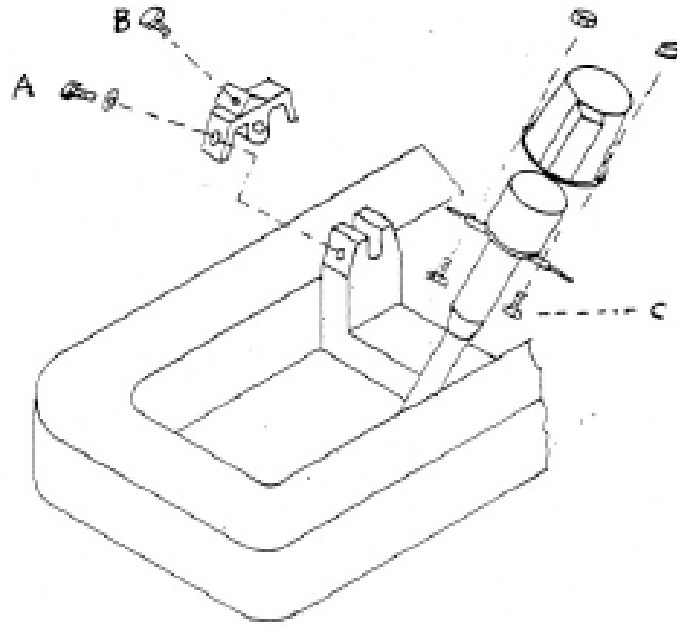


Fig. 1

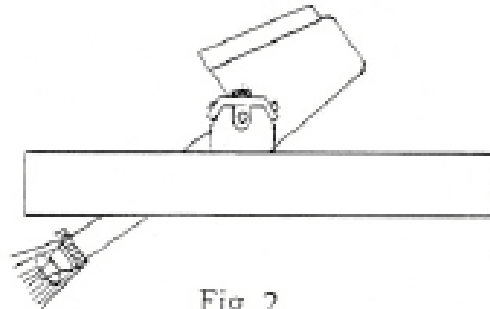
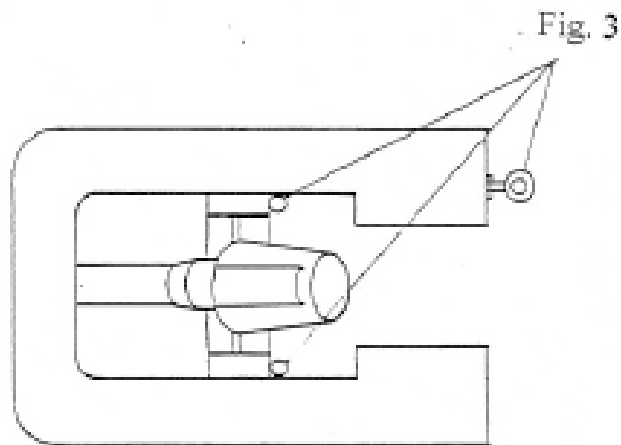
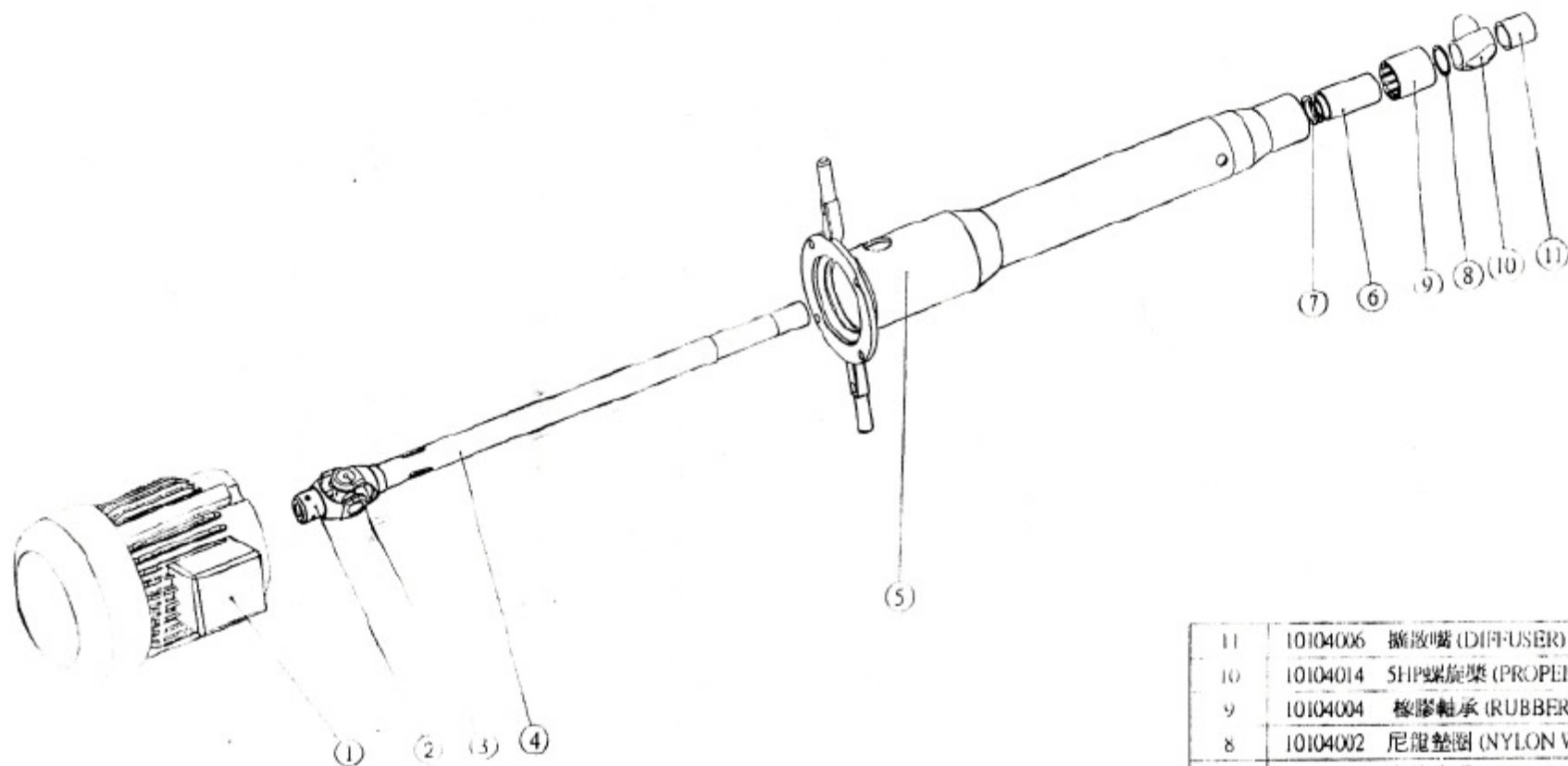


Fig. 2





11	10104006	擴散嘴 (DIFFUSER)	1
10	10104014	SHIP螺旋槳 (PROPELLER)	1
9	10104004	橡膠軸承 (RUBBER)	1
8	10104002	尼龍墊圈 (NYLON WASHER)	2
7	10104003	套筒止環 (WASHER)	1
6	10104005	套筒 (SLEEVE)	1
5	10103002	外套筒 (HOUSING)	1
4	10103006	主軸 (SHAFT)	1
3	10104001	十字接頭 (CROSS SET)	1
2	10104007	萬向接頭(馬達側) (YOKE)	1
1	10103008	SHIP馬達 (SHIP MOTOR)	1

